

ORAL IMPLICATIONS OF TOBACCO AND DRUG USE

Presented By:

Carol Robertson, BS, RDH

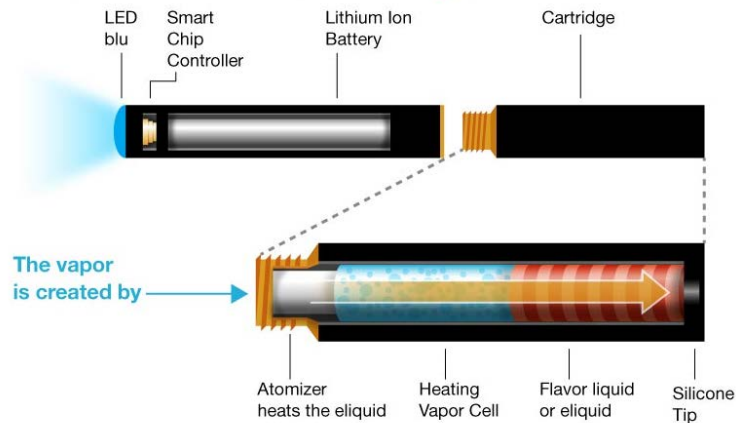
Pierce College Dental Hygiene Program

Oral Health Implications of E-Cigarettes, Hookahs & Bidis



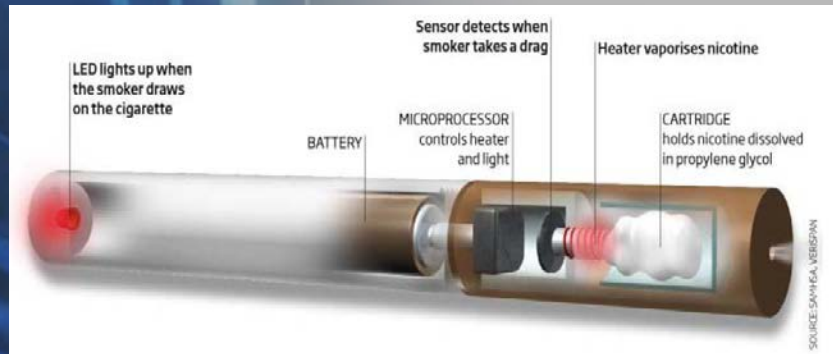
What are Electronic Cigarettes

Inside of Electronic Cigarette



Electronic nicotine-delivery system (ENDS)

A cigarette-like experience via a battery-operated atomizer



Vaporizes liquid-based nicotine from a small cartridge when the user inhales

What are Electronic Cigarettes

Delivers a chemical mixture typically composed of nicotine, propylene glycol and flavorings

concentration in the liquid-filled cartridges can range from nicotine-free loads of 0.0% to as much as 5.4% nicotine

May be a gateway to cigarette smoking!



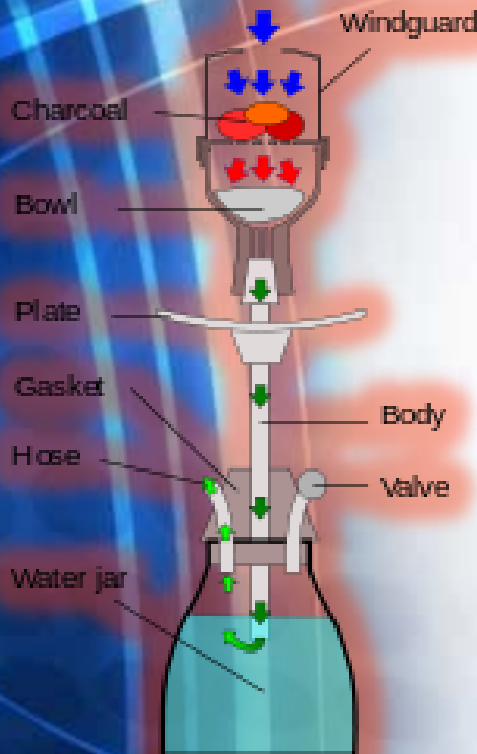
What are Hookahs

Smoking flavored nicotine through a water pipe

Smoking can last up to an hour--take deeper breaths

May inhale the equivalent of 100 or more cigarettes' worth of smoke within hour

Charcoal used to keep tobacco burning, inhaling Polyaromatic Hydrocarbons (PAH) & Carbon Monoxide (CO) --both have carcinogenic properties



What are Bidis



Small, thin, hand-rolled cigarettes imported from India and other Southeast Asian countries

Tobacco wrapped in a tendu or temburni leaf and secured with a colorful string at one or both ends

3 to 5 tx concentration of nicotine, tar & carbon monoxide than cigarettes



What are Bidis



Do not stay lit consistently, so smokers draw deeply to keep them burning.....

**High risk of nicotine addiction
Generate toxic second hand**



Oral Implications: Electronic Cigarettes

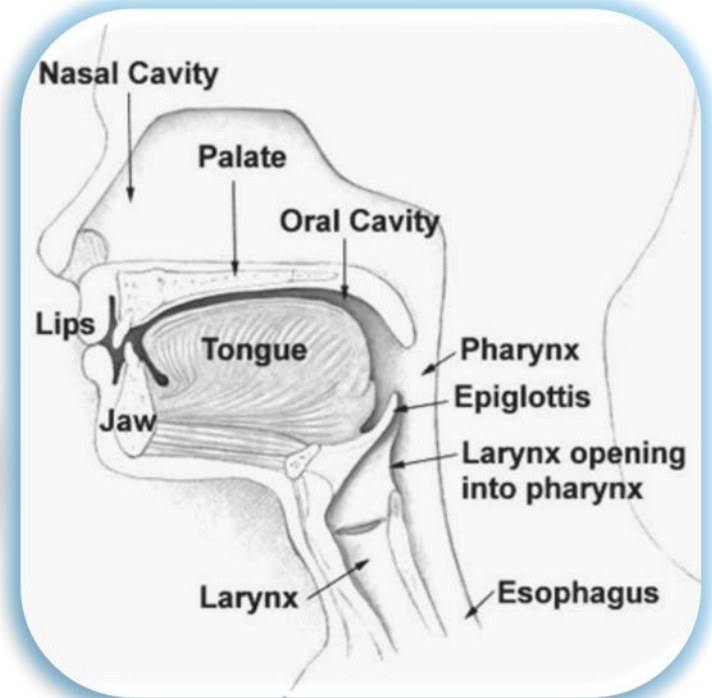
HPV 16 Infection--Sharing e-cigarettes



Oral Implications: Electronic Cigarettes

- The most harmful Oral Consequence of HPV is:

Esophageal Cancer



Oral Implications: Hookahs

**Oral Cancer
Periodontal Disease
Herpes Simplex
Hepatitis (B, C)**



Oral Implications: Bidis

Oral Cancer
Periodontal Disease
Dental Decay
Stained Teeth



Pin-up

The Smoker's Body

Every 6.5 seconds someone dies from tobacco use, says the World Health Organization. Research suggests that people who start smoking in their teens (as more than 70 percent do) and continue for two decades or more will die 20 to 25 years earlier than those who never light up. It is not just lung cancer or heart disease that cause serious health problems and death. Below, some of smoking's less publicized side effects—from head to toe.

1. Psoriasis Smoking causes inflammation in the body, which can lead to psoriasis, a chronic skin condition that causes red, itchy patches on the skin.

2. Cataracts Smoking is a leading cause of cataracts, a clouding of the eye's lens that can lead to blindness. Smoking also increases the risk of glaucoma, a group of eye conditions that damage the optic nerve.

3. Wrinkling Smoking causes premature aging of the skin, leading to wrinkles and sagging. Smoking also increases the risk of skin cancer, including melanoma.

4. Hearing loss Smoking causes damage to the inner ear, leading to hearing loss. Smoking also increases the risk of otitis media, a common ear infection.

5. Cancer Smoking is the leading cause of lung cancer, but it also increases the risk of many other cancers, including throat, esophagus, and bladder cancer. Smoking also increases the risk of leukemia and lymphoma.

6. Tooth decay Smoking causes dry mouth, which increases the risk of tooth decay. Smoking also increases the risk of periodontitis, a gum disease that can lead to tooth loss.

7. Emphysema Smoking is the leading cause of emphysema, a lung disease that destroys the air sacs in the lungs. Smoking also increases the risk of chronic bronchitis, a condition that causes persistent coughing and wheezing.

8. Osteoporosis Smoking causes bone loss, leading to osteoporosis, a condition that weakens the bones. Smoking also increases the risk of fractures, particularly in the hip and spine.

9. Heart disease Smoking is the leading cause of heart disease, which can lead to heart attack and stroke. Smoking also increases the risk of atherosclerosis, a condition that builds up plaque in the arteries.

10. Stomach ulcers Smoking causes stomach ulcers, which are sores on the lining of the stomach. Smoking also increases the risk of gastric cancer, a type of cancer that starts in the stomach.

11. Discoloured fingers Smoking causes yellowing of the fingers, a condition known as nicotine staining. Smoking also increases the risk of peripheral vascular disease, a condition that reduces blood flow to the limbs.

12. Cervical cancer and miscarriage Smoking increases the risk of cervical cancer, a type of cancer that starts in the cervix. Smoking also increases the risk of miscarriage and stillbirth.

13. Deformed sperm Smoking causes damage to the sperm, leading to deformed sperm. Smoking also increases the risk of infertility.

14. Buerger's disease Smoking causes Buerger's disease, a rare condition that affects the blood vessels in the hands and feet. Smoking also increases the risk of gangrene, a condition that can lead to amputation.

15. Need help quitting? Visit [WhyQuit.com](http://www.whyquit.com) for more information and resources to help you quit smoking.

More detailed PDF versions in English, Spanish & French can be downloaded at the World Health Organization's website at: <http://www.who.int/tobacco>

Oral Cancer

- 34,000 Americans will be diagnosed with oral cancer this year
- Cause over 8,000 deaths annually
- killing roughly 1 person per hour 24 hours per day

Oral Health Implications of Methamphetamine and Heroin Addiction



Meth & Heroin Mouths

Rapid Onset

Acute Disease Process

Often Associated With Pain

Devastating Consequences



Meth & Heroin Mouths

Dry Mouth

**Decreased salivation caused by
drug toxins**

Signs and Symptoms

Smooth, shiny tongue

Trouble with speech

Trouble swallowing

Trouble chewing



Meth & Heroin Mouths

Rampant Tooth Decay

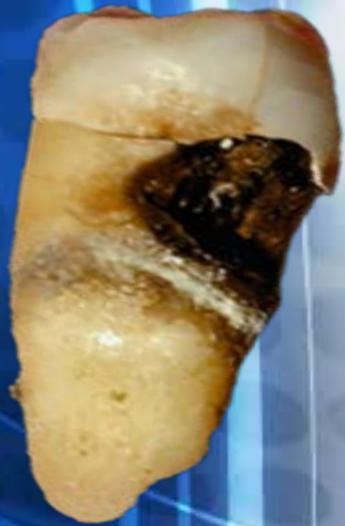
Destructive disease process of tooth structure

Symptoms

Rotting/ “Inside Out”

Dark/ Black Pigment

**In Between Front Teeth
cheek side of back teeth**



Meth & Heroin Mouths

Bruxism/Clenching/Grinding

Para-functional habit of the muscles of the mouth

Due to the stimulant nature of drugs

Irreversible Effects

Damaged tooth structure

Bone irritated and resorbed



Meth & Heroin Mouths

Oral Tissues Ulcers

Caustic chemicals and heat of both drugs (if smoking)--traumatic ulcers



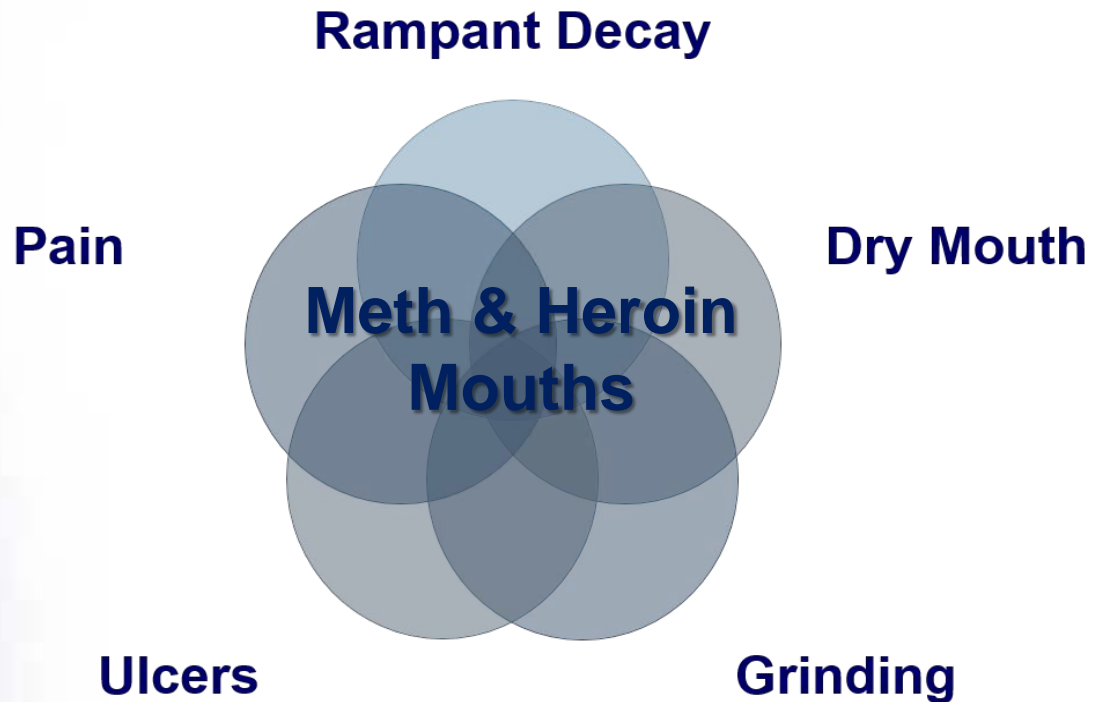
Meth & Heroin Mouths

- **Infections**
Candidiasis- Thrush
Herpes



Meth & Heroin Mouths:

A Cascade of Problems!



QUESTIONS



Thank You!

Pierce College Dental Hygiene Program



References

Ai Doan, Li Wendy, Vu Michelle
Methamphetamine Abuse & Oral Health
JADA. Vol 8 (3), 2014., 1-14

Henry R, Henderson R. The rise of e-cigarettes. *Dimensions of Dental Hygiene*. 2014;12(5):46–50.

Priscilla Callahan-Lyon
Electronic Cigarettes: Human Health Effects
Tobacco Control 2014; ii23-ii40 doi:10.1136/tobaccocontrol-2013-051470

World Health Organization. Backgrounder on WHO Report on Regulation of E-Cigarettes and Similar Products. Available. Accessed November 3, 2014.

Trophimus Gnanabagyma Jayakaran
The Effects of Drugs on the Oral Cavity- A Review
J. Pharm. Sci & Res. Vol. 6(2), 2014., 89-96